



THE

BAYOU

COMPANIES

The Bayou Companies is a 4th Generation, Family Owned Company



The Bayou Companies, LLC

- **Established in 1942**
- **Bayou Has Served the Needs of the Oil and Gas Industry with an Excellent Reputation for:**
 - Safety
 - Quality
 - Service
 - Dependability
 - Integrity
 - On-Time Delivery

New Iberia Infrastructure



- 1 - BAYOU COMPANIES OFFICES
- 2 - LARGE DIA FBE COATING PLANT
- 3 - SMALL DIA FBE COATING PLANT
- 4 - PIPE BENDING PLANT
- 5 - GGE FABRICATION YARD
- 6 - QUAD FAB "FOX YARD"

- 7 - DOUBLE JOINT FACILITY
- 8 - MULTI PURPOSE BUILDING
DOUBLE JOINT
ANODE TAPER INSTALLATION
BUCKLE ARRESTOR INSTALLATION
LARGE DIA ID COATING
- 9 - SMALL DIA ID COATING PLANT

- 10 - PERMA-PIPE INSULATION PLANT
- 11 - 250 TON CRAWLER CRANE
- 12 - QUAD FABRICATION YARD
AND INSERTION RACK
- 13 - OFFSITE STORAGE YARD
- 14 - CUSTOMER OFFICE FACILITIES
- 15 - ADDITIONAL ACREAGE
- 16 - CUMING CORPORATION INSULATION PLANT

Bayou is Proud of its Ability to Adapt to the Needs of the Customer

- Improving and Expanding our Products and Services
- Providing Added Value
- Products and Services our Customers have come to depend on, not wait on.

Fusion Bond Epoxy Coating

- 3 FBE Coating Plants in Louisiana
- 2" thru 48" O.D.
- Lengths up to 90 ft.
- 2-Layer FBE for Higher Temp or Abrasion Resistance

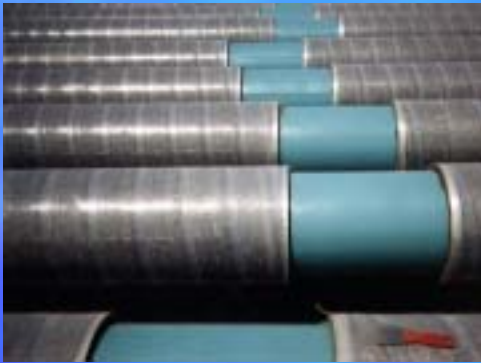


Internal Flow Efficiency Coating

- 3 ID Coating Plants in Louisiana
- 4" thru 48" O.D.
- Lengths up to 90 ft



Concrete Coating



Portable Concrete Coating Plant



Welding Fabrication

- Small Structure Fabrication
- Shop Fabrication
- Launchers
- Receivers
- Process Skids
- Meter Skids
- Subsea Manifolds
- Production Manifolds
- Jumpers
- Side Tap Assemblies
- Riser Clamps
- Tanks
- D.O.T. Tanks
- Freight Containers
- Spool Piping
- Well Templates
- Double, Quad Jointing

J-Lay Collar, Buckle Arrestor, Bulkhead, Anode Installation



Pipe Bending

- 1" thru 8" pipe
- All thicknesses Sch. 40 and above
- Carbon steel as well as stainless steel and certain alloys
- Range of angles from 0 to 180 degrees
- Bending radius is 3R and 5R
- Bare or coated pipe up to 44' in length



Pipeline Thermal Insulation Systems

Pipe-in-Pipe

- Low density polyurethane foam (PUF) with Extruded Polyethylene (PE) jacket insulated pipe-in-pipe for deepwater J-lay, S-lay and reeled applications



Outer Jacket PE/PU

- High Density Polyethylene
- Controlled Thickness
- Bonds to Foam
- Flexural Strength
- Excellent Mechanical Properties



Multiple Joint Fabrication

- 1991 - Completed First Quadruple joint Fabrication Job, Auger
- 1994 - Built the First Quadruple Joint Facility for Fabrication of Pipe for the J-Lay Method of Installation
- 1998 - Second pipe-in-Pipe Quadruple Joint Line Added



Pipe-in-Pipe Fabrication

Main Quad Yard



Pipe-in-Pipe Fabrication & Insertion Assembly Lines (520' & 340')



Custom Coating Services

- Pipe, Bends, Fabrications and Valves
- ID, OD, with FBE, Epoxies, and Urethanes
- Available via portable plants throughout the world



Custom Coating Services

- Spool Pieces, Odd Shapes and Sizes



Metallizing (Thermal Spray Metal Coatings)



Metallizing (Thermal Spray Metal Coatings)



Metallizing (Thermal Spray Metal Coatings)

This summer, Bayou will complete construction of a state-of-the-art inline metallizing plant in New Iberia, LA.

Also available is custom metallizing applied both in the shop and the field.

GatorBack™ Infill System



Field Joint Coating

- Fusion Bonded Epoxy
- Dual Layer Epoxy Systems
- Liquid Epoxy and Polyurethanes
- Metallizing – Thermal Spray Metal Coatings
- Multi-layer PP and PE Flame Spray
- 3 Layer Wide Sheet Polypropylene
- Solid Polyurethane
- GatorBack™ Concrete Joint Infill



Field Services

- More than TWO million field joints coated worldwide



Field Services

- Worlds largest fleet of field joint coating systems



Pipeline Equipment Rental



**Pipe Bending
Machines,
Mandrels**



**Internal
Line-Up Clamps,
Die Sets**



Shipping and Handling

One of Bayou's Strong Suits is Pipe Handling



Bayou Shipping via

- Truck
- Rail
- Barge
- Ship
- 250 Ton Crawler Crane
- Offsite Storage yard in New Iberia



Loadout

- Function of Equipment & Personnel Dedicated to the Requirement
- 24 Hour Loadout Capabilities
- 6 Barge Loading / Unloading Bulkheads
- 6,000' Canal Frontage Loadout Area

Tell us what is required - we will tailor our services to Meet Your Needs

Tapes, Epoxy's & Field Joint Material

- RAYCHEM heat shrinkable corrosion prevention products for the pipeline industry
- TAPE COAT hot & cold pipe wrap tape & primer, 2", 4" & 6" widths
- POLYKEN field joint material & supplies including cold pipe wrap tape & primer in 2", 4" & 6" widths
- 3M SCOTCHKOTE 2-part epoxy kits & patch sticks
- NAPKO 2-part epoxy kits & patch sticks
- DENSO 2-part epoxy
- CARBOLINE BITUMASTIC coal tar coating, 1-part or 2-part
- CARBOLINE coal tar primer & thinner
- JIFFY padding

Project Management

- Shell Llano

- 115,500' of 8" 1.158 & 12" .500 pipe-in-pipe

- 9,960' of 6" 1.067 wall SCR pipe

- FBE coating on all pipe joints

- ID blast cleaned all 8" pipe & 10' of one end on the 12' pipe

- PUF insulation with an extruded polyethylene jacket & "rolled down ends" on 8" joints

- FBE coating on all buckle arrestors and 12" field joints

- PUF half shells encased with molded Floatec for 8" field joints

- Wet insulation on SCR pipe

- 660 – 8" & 12" PIP quad joints

- 56 – 6" SCR quads

- 6 – 6" SCR triple joints

- 2 – 6" SCR stress joints

- 660 – 12" buckle arrestors

- 330 – 12" anodes anodes with half tapers

- TSA application on the ends of the 6" SCR's

Project Management

Cameron Highway

- 773,700' of 24" .321, .330, .500, .515, & .846 wall line pipe
- 1,292,000' of 30" .643 & .812 wall line pipe
- FBE coating on all
- 71,800' of 24" .321 with 2.2", 190# CWC
- 40,800' of 24" .321 with 3.0", 190# CWC
- 35,000' of 24" .330 & .846 with ARO
- 449,000' of 24" .515 shipped & load onto barges in Sabine Pass

Bayou is pleased to have worked for all of the major oil and gas companies with hundreds of projects and thousands of miles of pipe.



KNOWN BY THE COMPANY WE KEEP.



and projects completed ontime "from A to Z"...

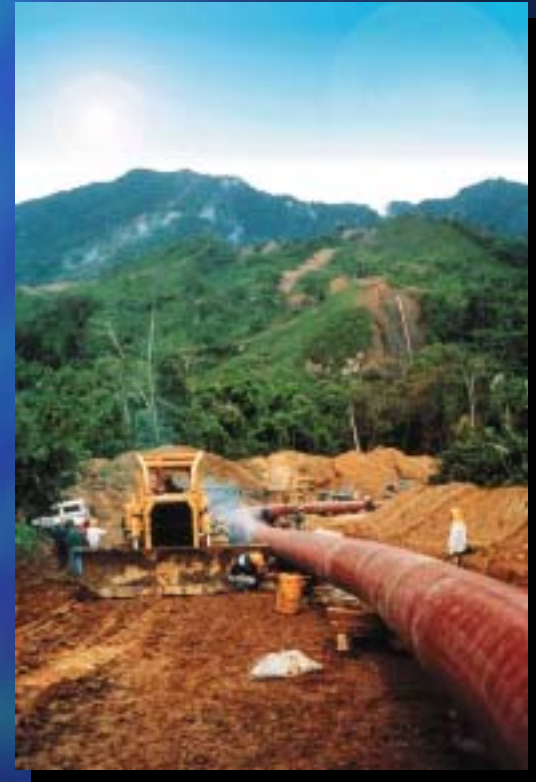
Alabaster
Allegheny
Amberjack
Arnold / Oyster
Auger
Barracuda
Brutus
Bud
Bullwinkle
Cameron Hwy
Canyon Express
Cognac
Cinnamon
Cobia

Cooper
Crosby
Diana
Discovery
Enchilada
Europa
Frontrunner
Gemini
Genesis
Gunnison
Habanero
Hickory
Joliet
King

Kizomba A
Llano
Macaroni
Madison
Magnolia
Manatee-reeled
Manta Ray
Marco Polo
Marlin
Mars
Marshall
Mensa
Mica
Nakika

Oregano
Petronius
Phoenix
Popeye
Ram Powell
Rocky
Salsa
Serrano
Tahoe
Troika
Ursa
Yellow Hammer
Viosca Knoll Gas
Gathering
Zia

Bayou can take care of your needs from the sea-bed to the top of the world.



Major Projects Recently Completed

- Shell Gunnison
- GulfTerra Marco Polo
- Manta Ray Cameron Highway
- Shell Habanero
- Shell Llano
- GulfTerra Phoenix
- Murphy Frontrunner
- Williams Discovery Frontrunner
- GulfTerra Poseidon Frontrunner
- Shell Magnolia
- Exxon Kizomba A

The background is a vibrant, abstract composition of blue and purple hues, with a white crosshair consisting of a vertical line on the left and a horizontal line near the top. The text "Thank you" is centered in the lower half of the image.

Thank you



THE

BAYOU

COMPANIES